



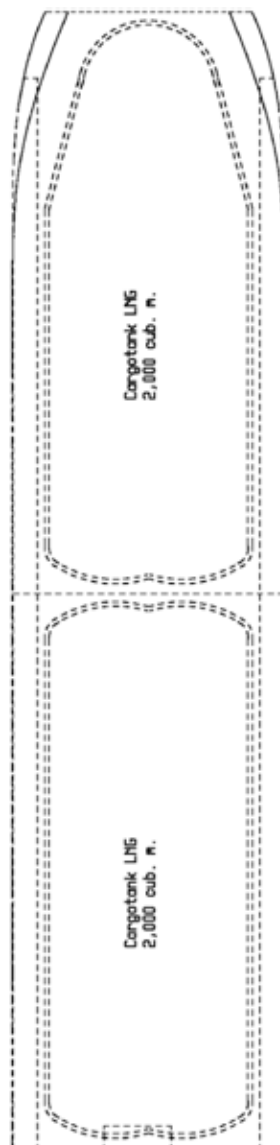
## VEKA SHORTSEA LNG CARRIER



With stricter emission regulations and rapidly rising marine fuel prices on the horizon, LNG is predicted to be the marine fuel of the near future. To cover the current gaps in this changing market, VEKA introduces a line of highly innovative LNG carriers.

The short sea LNG carrier is the missing link in the developing small scale LNG market. With its humble size, the ship is designed for supplying both small scale LNG terminals as well as for ship-to-ship bunkering. The ship's dual fuel engine that runs on the "boil-off" of the LNG cargo efficiently power the ship.

VEKA has a strong track record in LNG shipbuilding. In 2004 we received the 'Clean Marine Award' for the development of the groundbreaking Pioneer Knutsen, the first ever LNG carrier equipped with double engine rooms.



## TECHNICAL SPECIFICATIONS

### Principal Dimensions

Length overall	: 99.00 m
Length waterline	: 96.00 m
Beam	: 15.40 m
Depth	: 9.60 m
Draft	: 4.30 m
Deadweight	: 2,500 tons

### Cargo tanks

Capacity	: 2x 2,000 m <sup>3</sup>
Tank pressure	: 4.5 bar
Discharging rate	: 350 m <sup>3</sup> /h

### Power and Propulsion

Main engine	: Dual fuel, 1,400 kW
Service Speed	: 11 knots

Design	: Leissner Maritime
	: Groot Ship Design

All specifications and general arrangements as provided in this document are provisional.

B-02



VEKA Group bv  
 T +31 (0)183 - 505 230  
 info@vekagroup.com  
 www.vekagroup.com