



## BIJLSMA TRADER 3250

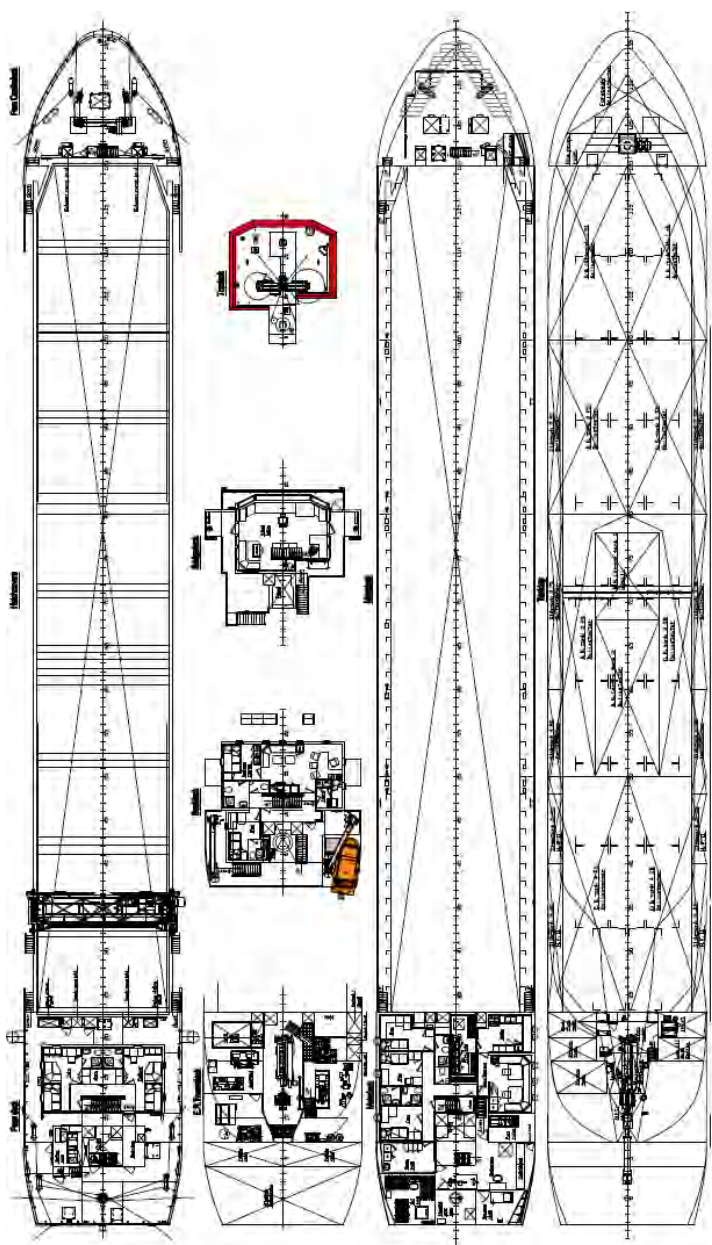


The Bijlsma trader 3250 is the true multipurpose vessel in the range of Bijlsma shortsea vessels. Equipped with a tanktop strength of 20 tons per square meter, the vessel is specifically designed to carry heavy bulk cargos.

The vessel can also carry a wide variety of bulk cargoes such as timber, paper, coal, grains, as well as containers. The vessel is equipped with pontoon hatches and the hold has two separation bulkheads, which can be placed at 8 different positions. In hold, the vessel can carry up to 56 TEU containers, and 48 another TEU containers on deck.

To comply with upcoming SECA emission restrictions, the vessel can be equipped with LNG or dual fuel engines. Alternatively the vessel can be equipped with more traditional engines that run on heavy fuel oil, or marine diesel oil.





## TECHNICAL SPECIFICATIONS

### Principal dimensions

Length overall	: 88.97 m
Length waterline	: 84.99 m
Beam	: 11.80 m
Depth	: 6.90 m
Max draft	: 5.05 m
Deadweight	: 3,250 tons
Gross tonnage	: 2,300 tons
Hold capacity	: 4,500 m <sup>3</sup>

### Container capacity

In hold	: 56 TEU
On deck	: 48 TEU
Total	: 104 TEU

### Tank Capacities

Ballast water	: 1,282 m <sup>3</sup>
Gas oil	: 35 m <sup>3</sup>
I.F.O. 380	: 225 m <sup>3</sup>
Potable water	: 44 m <sup>3</sup>

Classification	: B.V.
----------------	--------

All specifications and general arrangements as provided in this document are provisional.

A-01

