



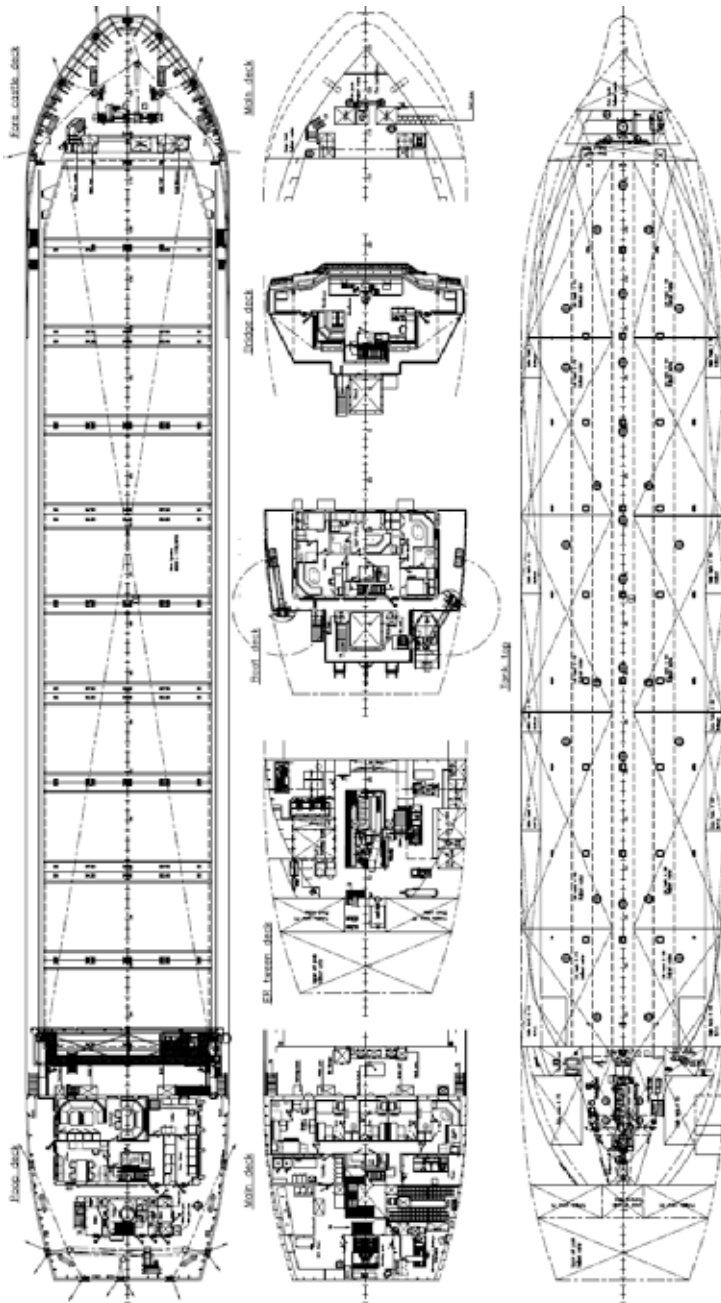
BIJLSMA TRADER 4500



The Bijlsma trader 4500 represents a successful series of single deck dry cargo vessels, which have been developed for globally operating ship-owners.

The cargo hold section consists of one box-shaped compartment with ballast tanks in the double hull and double bottom. The obstruction free hold can be subdivided into three compartments by two adjustable grain bulkheads. When not in use the bulkhead sections can be stored in such a way that they do not encroach upon the ship's cargo hold space.

The hull has been optimized in view of speed, power and deadweight aspects. The main propulsion plant consists of a 1860 kW diesel engine, sufficient for a service speed of 12.5 knots.



TECHNICAL SPECIFICATIONS

Principal Dimensions

Length overall	: 89.95 m
Length waterline	: 84.98 m
Beam	: 14.40 m
Depth	: 7.35 m
Max draft	: 5.83 m
Deadweight	: 4,550 tons
Gross tonnage	: 2,999 tons
Hold capacity	: 6,060 m ³

Container capacity

In hold	: 68 TEU
On deck	: 38 TEU
Total	: 106 TEU

Tank Capacities

Ballast water	: 1,711 m ³
Gas oil	: 32 m ³
I.F.O. 380	: 430 m ³
Potable water	: 50 m ³

Classification	: B.V.
----------------	--------

All specifications and general arrangements as provided in this document are provisional.

A-03



VEKA Group bv
 T +31 (0)183 - 505 230
 info@vekagroup.com
 www.vekagroup.com